

34300 N. I Route 83
Grayslake, IL 60030

Aerial



FEMA



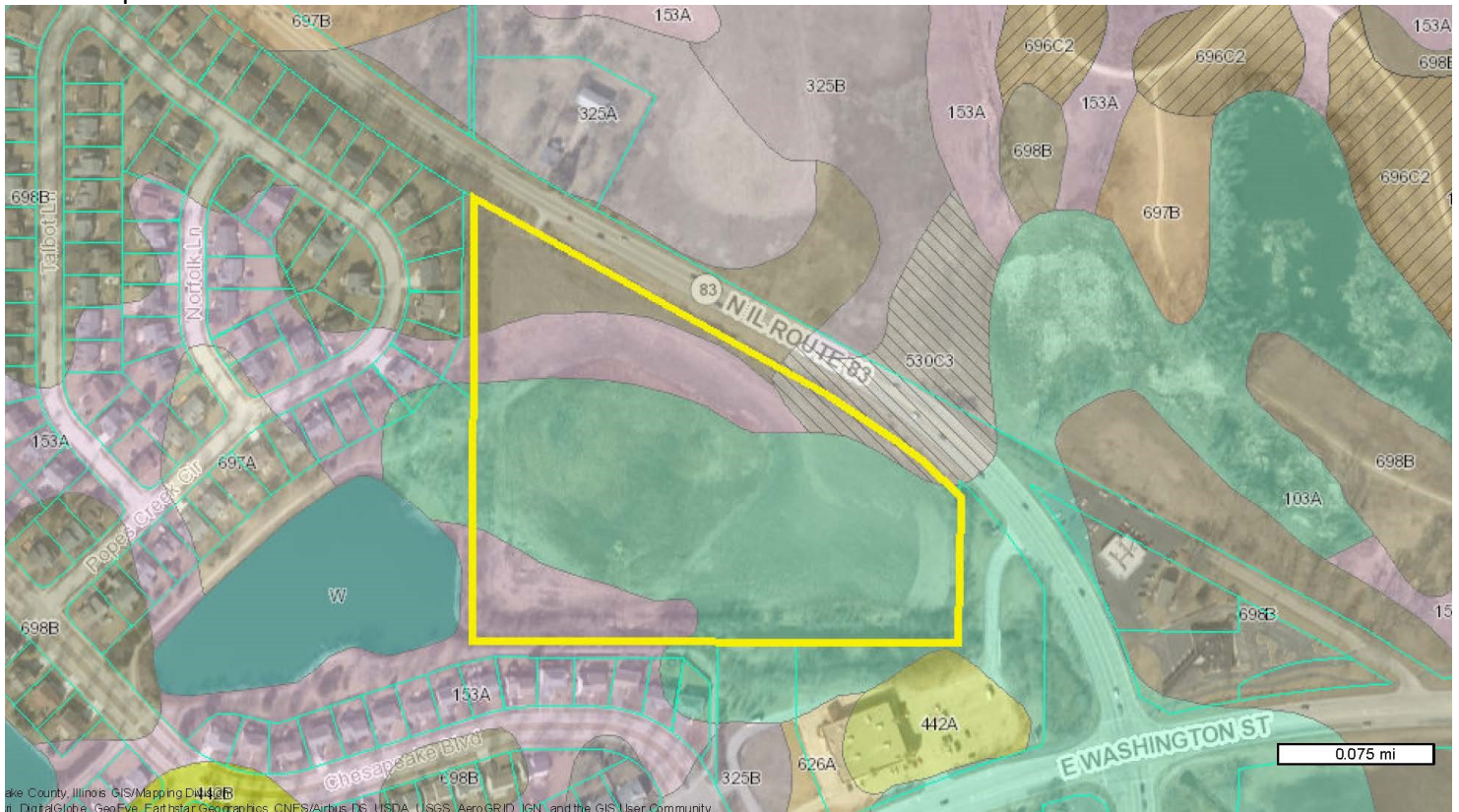
34300 N. I Route 83

Grayslake, IL 60030

Lake County Wetland Inventory



Soil Map



Soil Type: 153A—153A = 2.8429 Acres

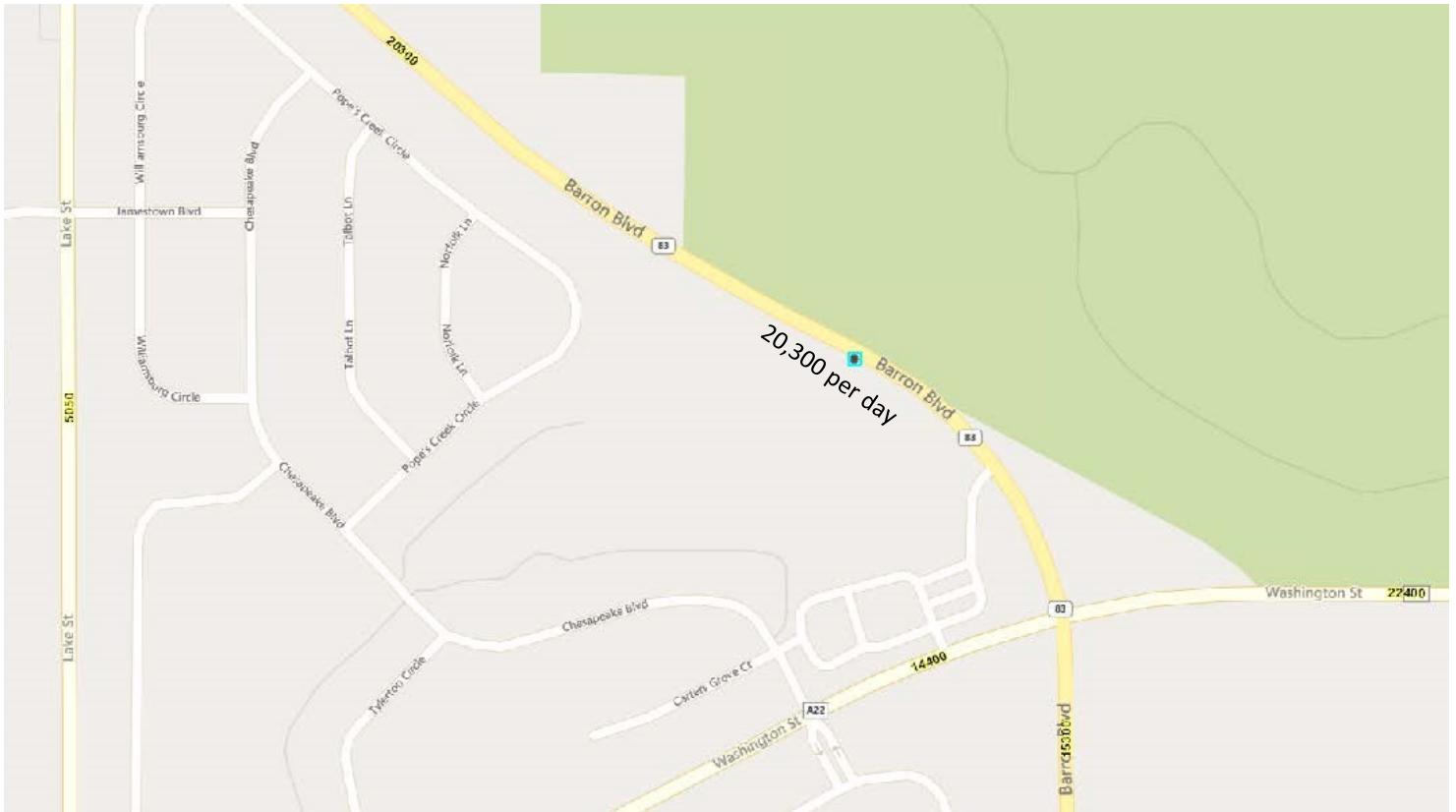
Soil Type: 103A—103A = 7.6779 Acres

Soil Type: 530C3—530C3 = .3738 Acre

Soil Type: 698B—698B = 1.0891 Acres

34300 N. I Route 83
Grayslake, IL 60030

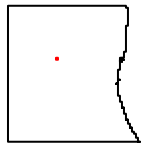
IDOT Traffic Count



Realist Plat Map



34300 N. IL Rte. 83 - Topo



Lake County, Illinois



Map Printed on 1/29/2020



Areas

Override 1

Tax Parcel Lines

Tax Parcel
Information

1ft Contours (2007)

Major

MajorText

Minor

Road Labels

Disclaimer:

The selected feature may not occur anywhere in the current map extent. A Registered Land Surveyor should be consulted to determine the precise location of property boundaries on the ground. This map does not constitute a regulatory determination and is not a base for engineering design. This map is intended to be viewed and printed in color.